

# *French Mouldings*

Skirting and ceiling borders | Covings and  
cornices | Corner blockes



## About us

Since 2015, our premium brand Adhams has been redefining interiors with high-quality decoration concepts. Now, Adhams has conquered the front row position with pride. It offers hundreds of premium products that bring timeless style to your every space.



## Why choose ADHAMS ?

### **Quality Products:**

We ensure the highest quality in our materials, sourced from trusted manufacturers.

### **Competitive Pricing:**

We offer competitive prices without compromising quality, making our products accessible to all.

### **Expert Assistance:**

Our knowledgeable staff is always available to help you choose the right materials for your needs.

### **Wide Range of Options:**

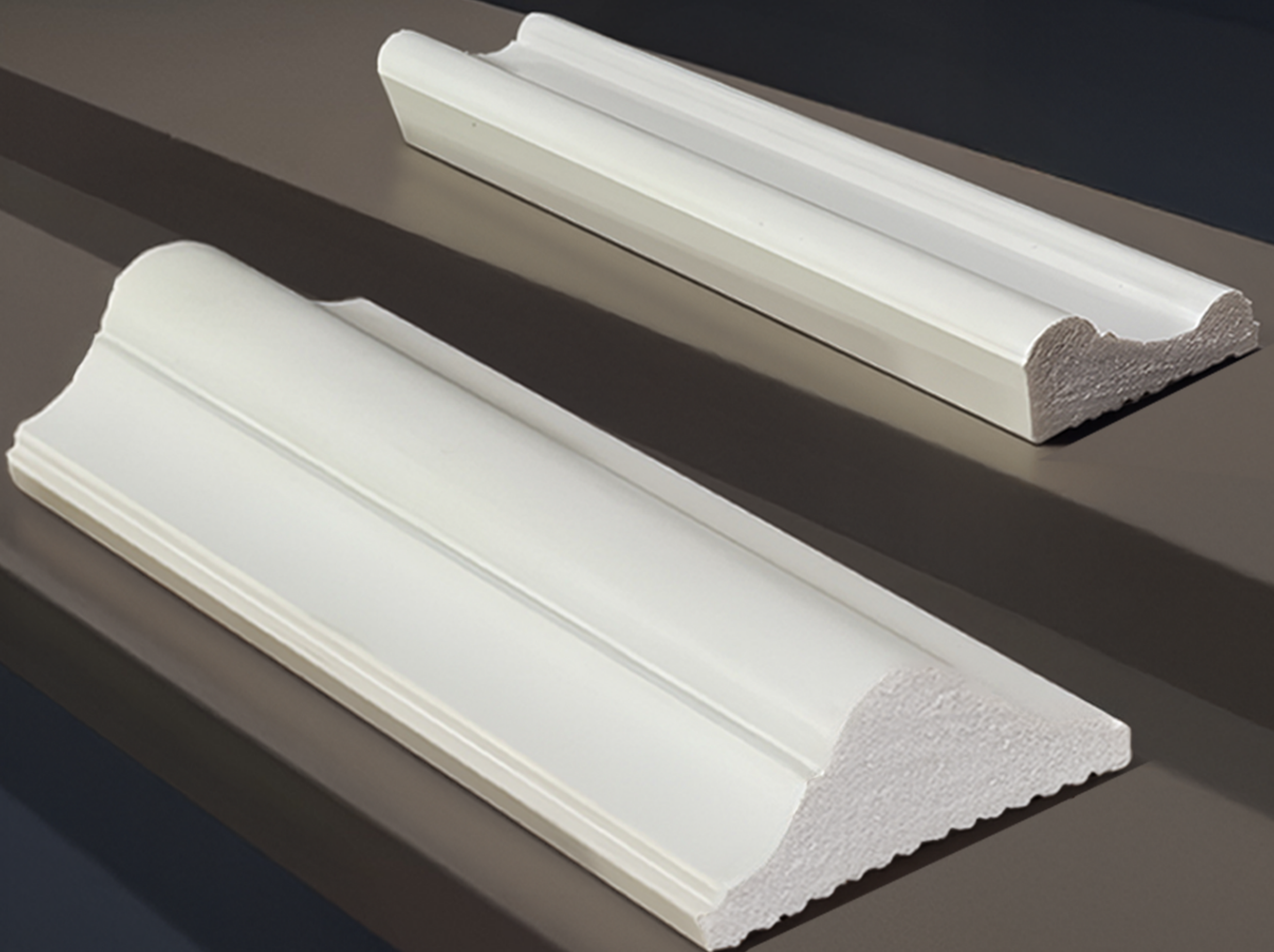
Our extensive product range caters to diverse styles and requirements.

### **Wide Network:**

We have hundreds of trusted dealers and can deliver anywhere in India, ensuring wide coverage and accessibility across the country.

## FRENCH MOLDINGS

French moldings are intricate architectural details that elevate the elegance and sophistication of interior spaces, reflecting the timeless charm of classical French design. Commonly used on walls, ceilings, doors, and windows, French moldings add depth, character, and a sense of luxury to both traditional and modern interiors. They help define spaces beautifully, creating visual interest while maintaining balance and harmony in the design. Whether applied as subtle decorative trims or elaborate statement features, French moldings bring a touch of European artistry and enduring refinement to any interior setting.



# Key features :



Paintable



Quick installation



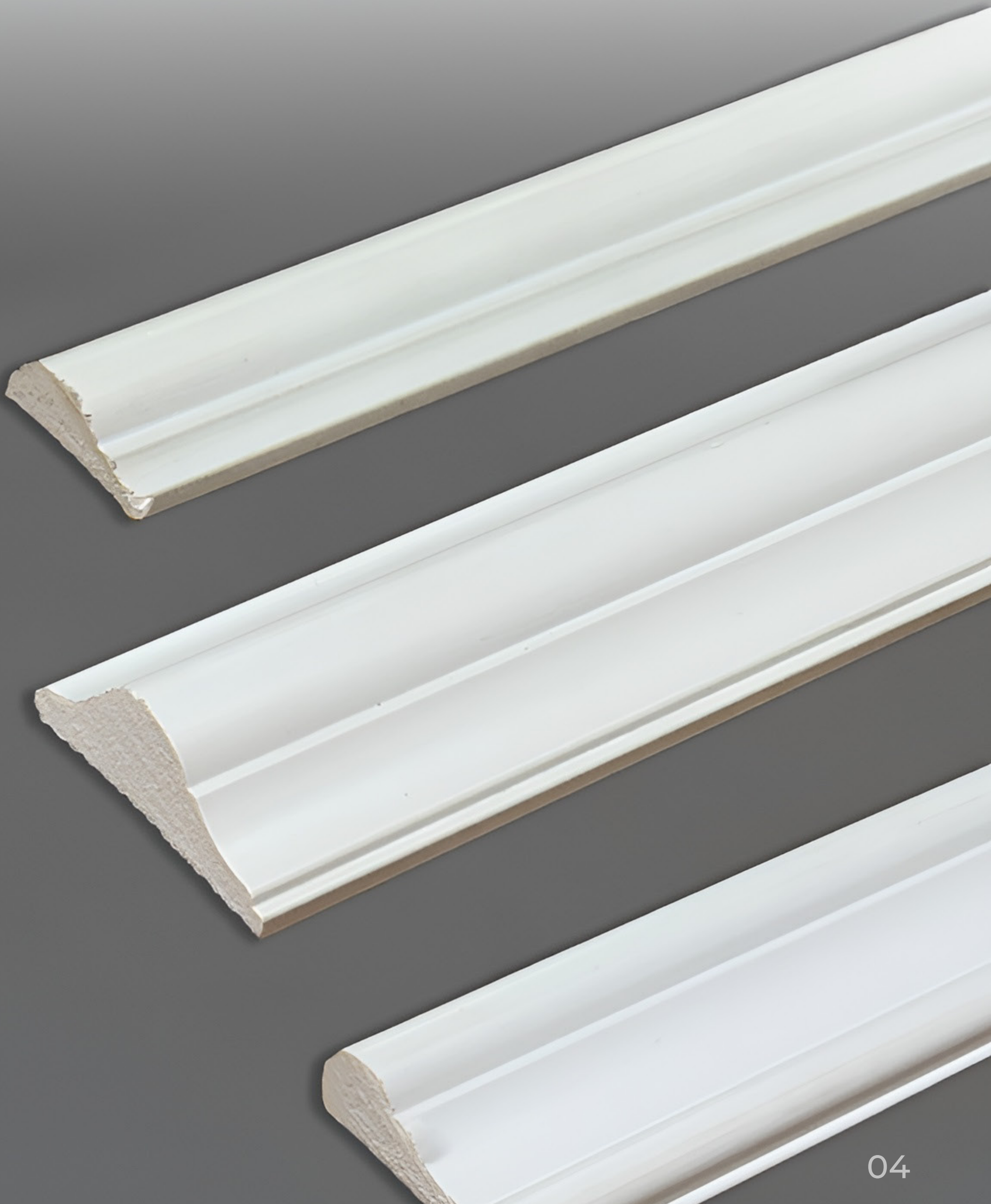
100% Waterproof



Termite &  
Pest proof



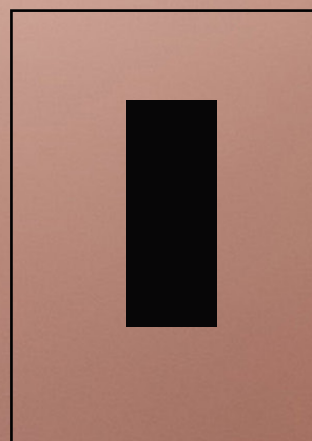
Easy to clean



# | PS MOLDING ( FLAT )

AD- FLAT

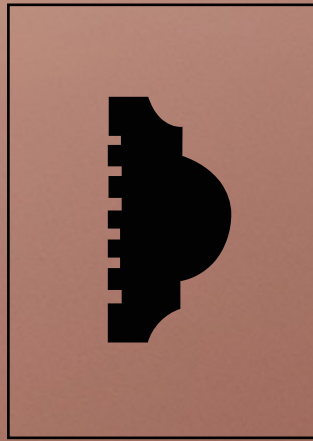
30mmX12mmX2440mm



# | PS MOLDING ( D MOLD )

AD- D25

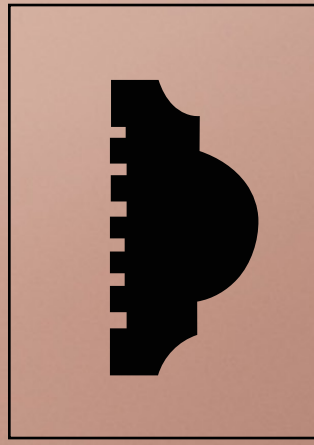
23mmX2440mm



# | PS MOLDING ( D MOLD )

AD- D40

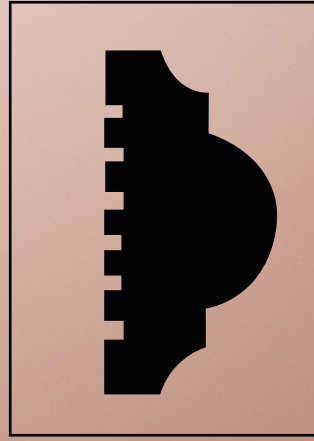
38mmX2440mm



# | PS MOLDING ( D MOLD )

AD- D60

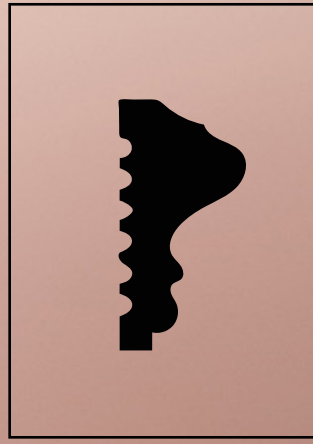
60mmX2440mm



# | PS MOLDING ( P MOLD )

AD- P25

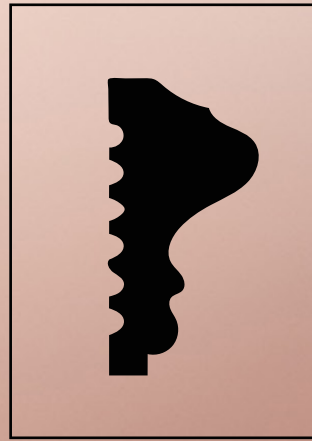
23mmX2440mm



# | PS MOLDING ( P MOLD )

AD- P40

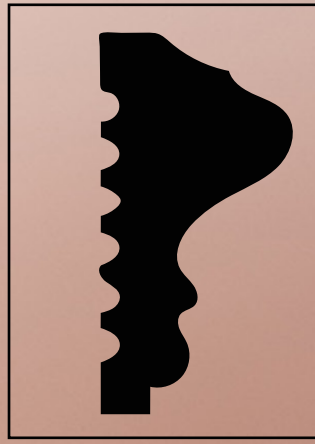
38mmX2440mm



# | PS MOLDING ( P MOLD )

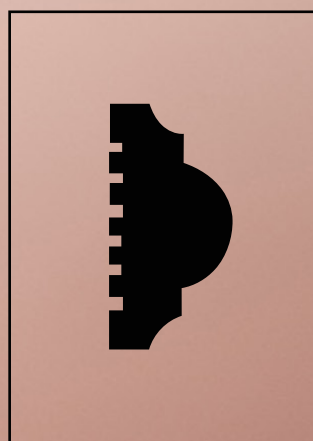
AD- P60

60mmX2440mm



# | PS MOLDING ( D MOLD )

AD- D25 GOLD  
23mmX2440mm



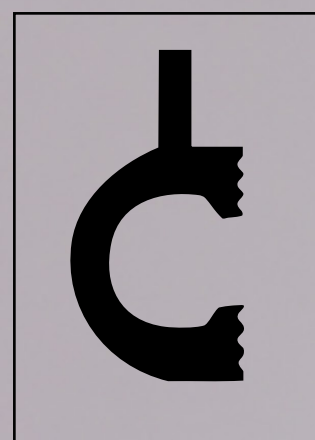


# | PS MOLDING ( LED )



AD- LED66

66mmX34mmX2440mm

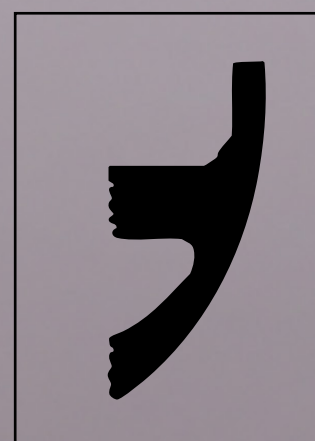


# | PS MOLDING ( LED )



AD- LED75

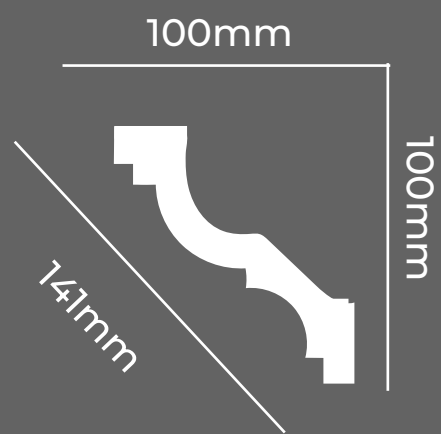
75mmX35mmX2440mm

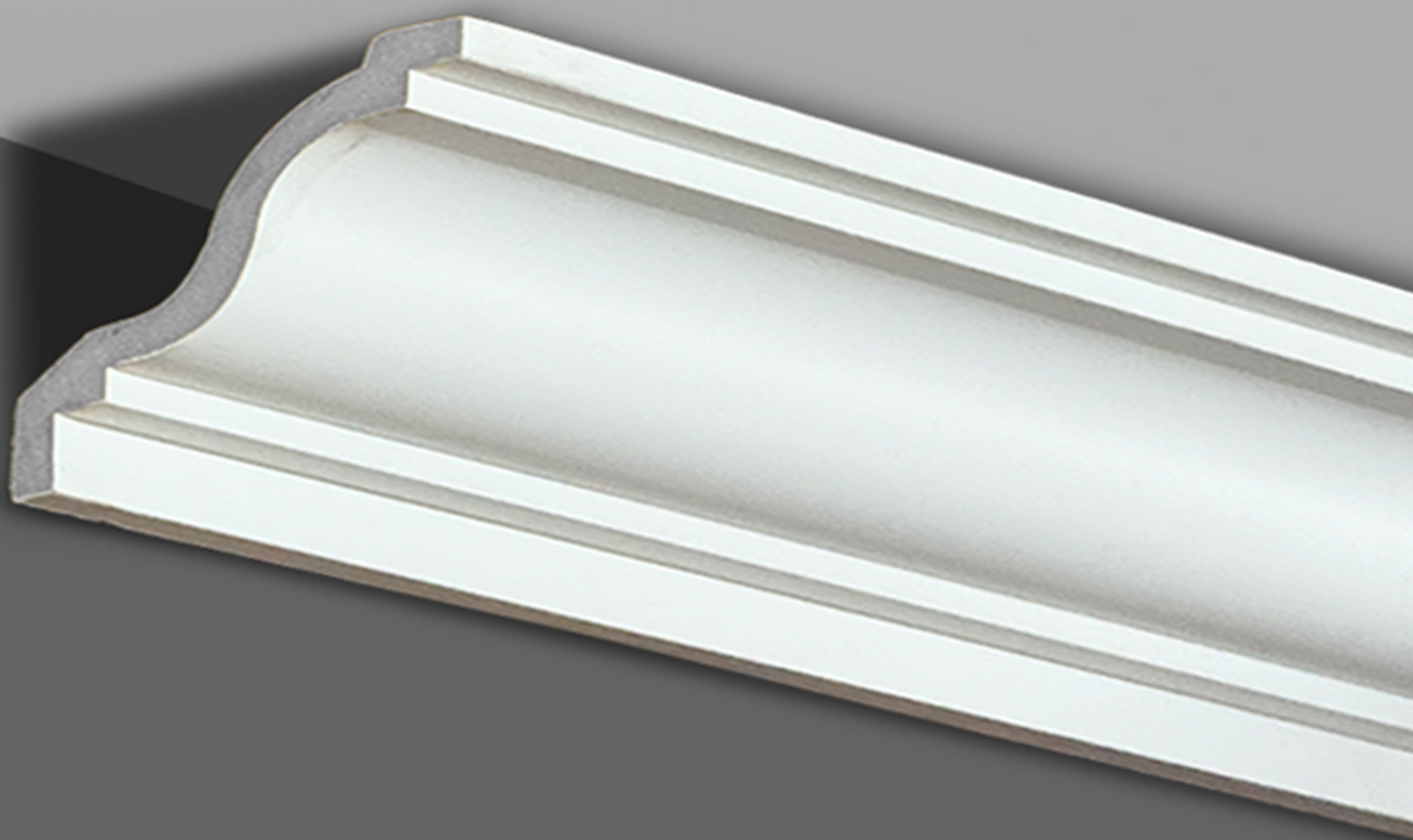


# | COVING AND CORNICES

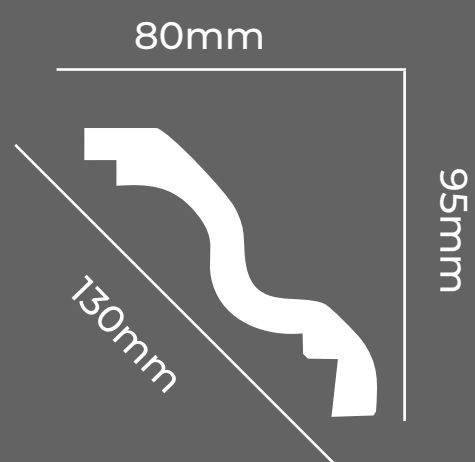


AD C-141



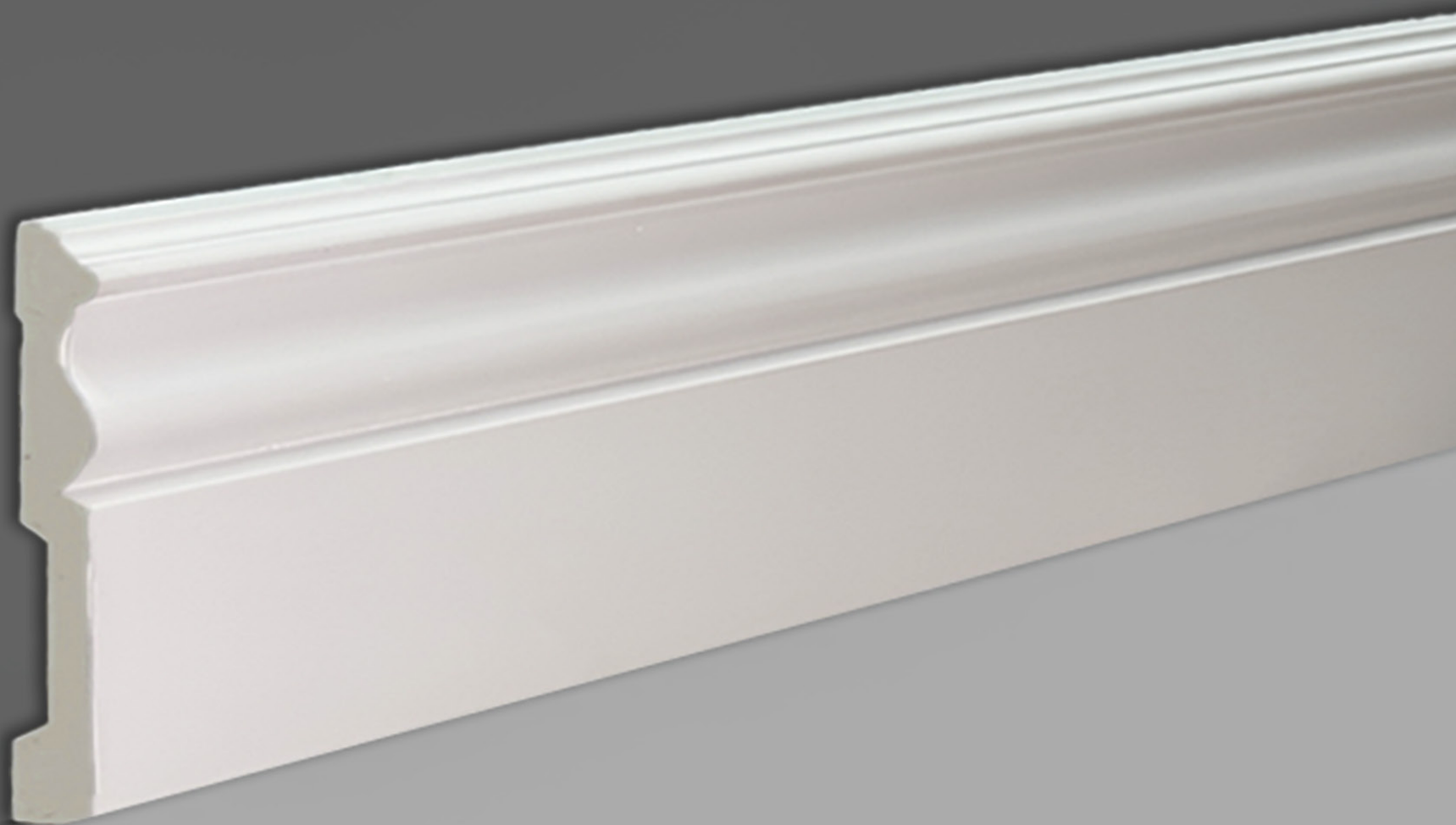


# AD C-035

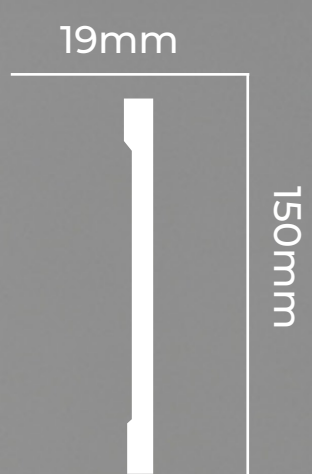


# | SKIRTINGS AND CEILING BORDERS

## AD D-056

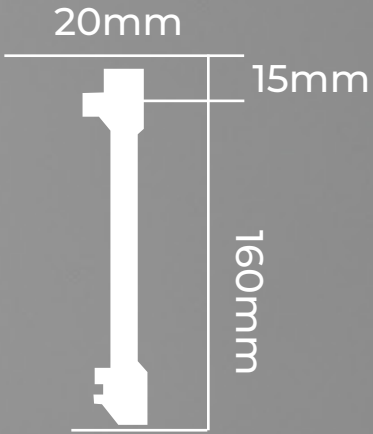


# AD B-068



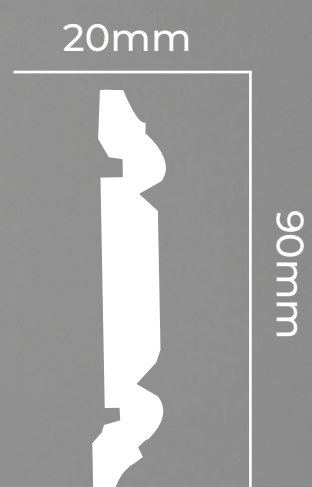


# AD B-150

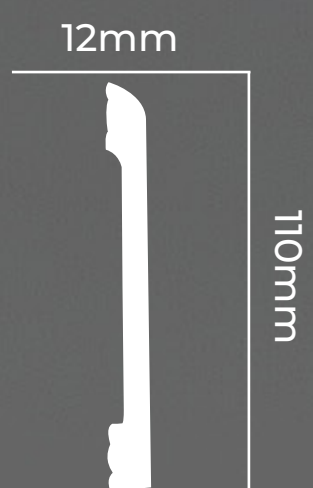




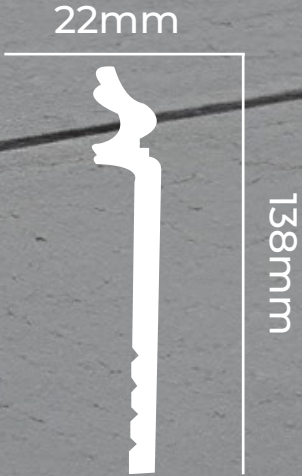
AD B-093



# AD D-152



# AD D-166





# CORNER BLOCKS



# Royal Finish for Your Walls

French moldings bring a refined sense of luxury and sophistication to modern homes. Inspired by classic European design and reimagined for contemporary interiors, these elegant details add depth, balance, and character to every space. With clean lines, premium craftsmanship, and a timeless aesthetic, French moldings transform ordinary walls into graceful design statements. Ideal for living rooms, bedrooms, and upscale interiors, they create a subtle expression of elegance and heritage while perfectly complementing modern living.

*Thank You*



**Adhams**<sup>®</sup>

Thiruvananthapuram, Cochin, Calicut, kannur, bangalore, Chennai